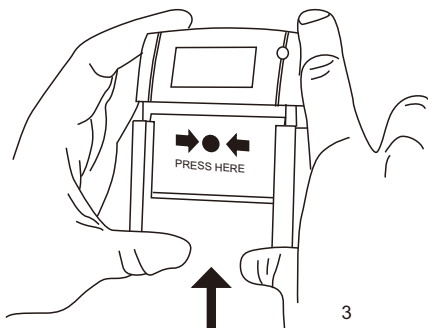
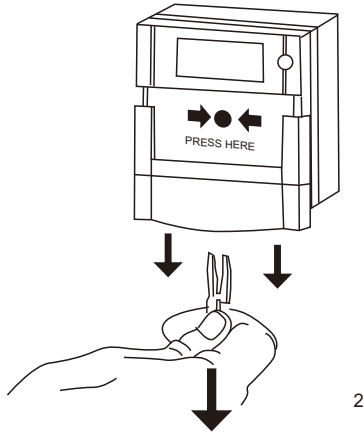
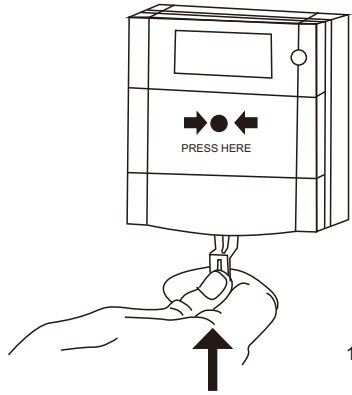
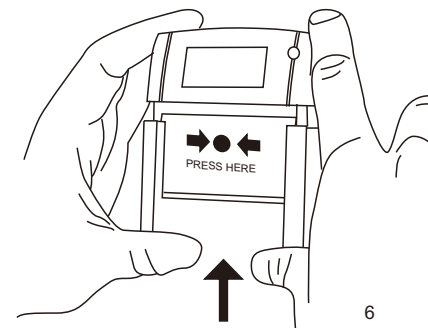
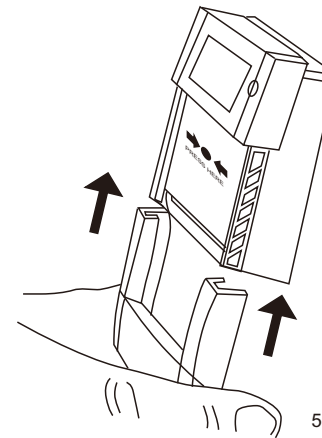
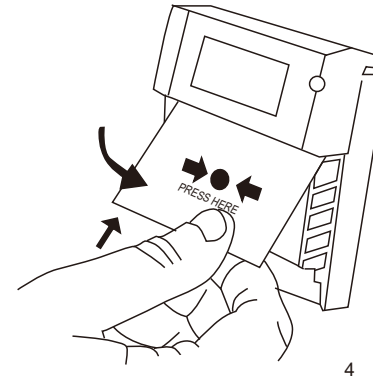
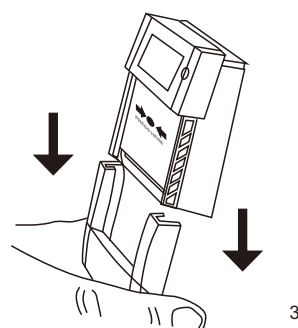
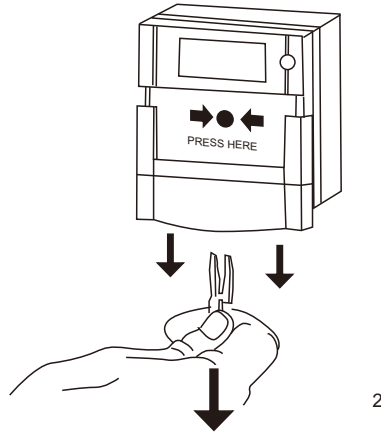
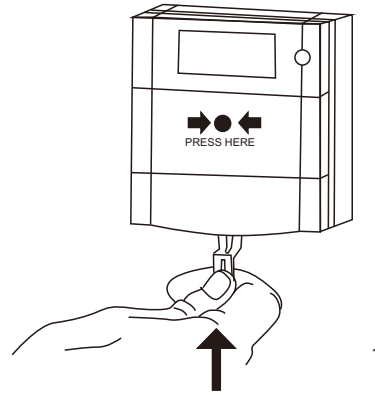


NOTICE INSTALLATION 1BDG-2C

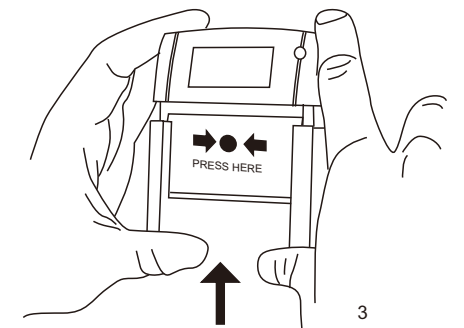
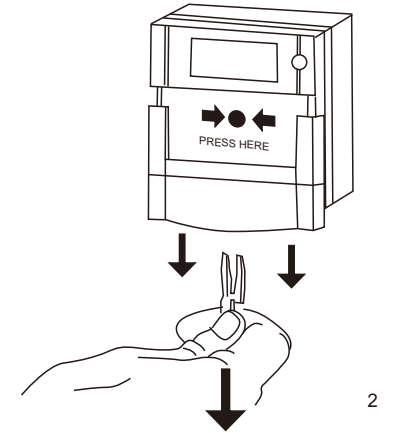
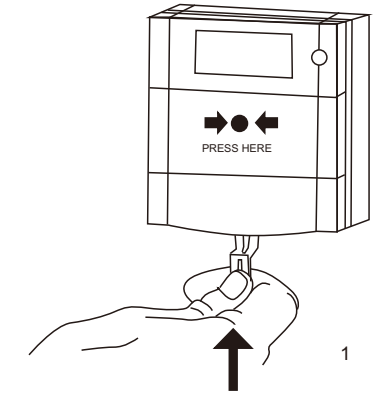
POUR TESTER



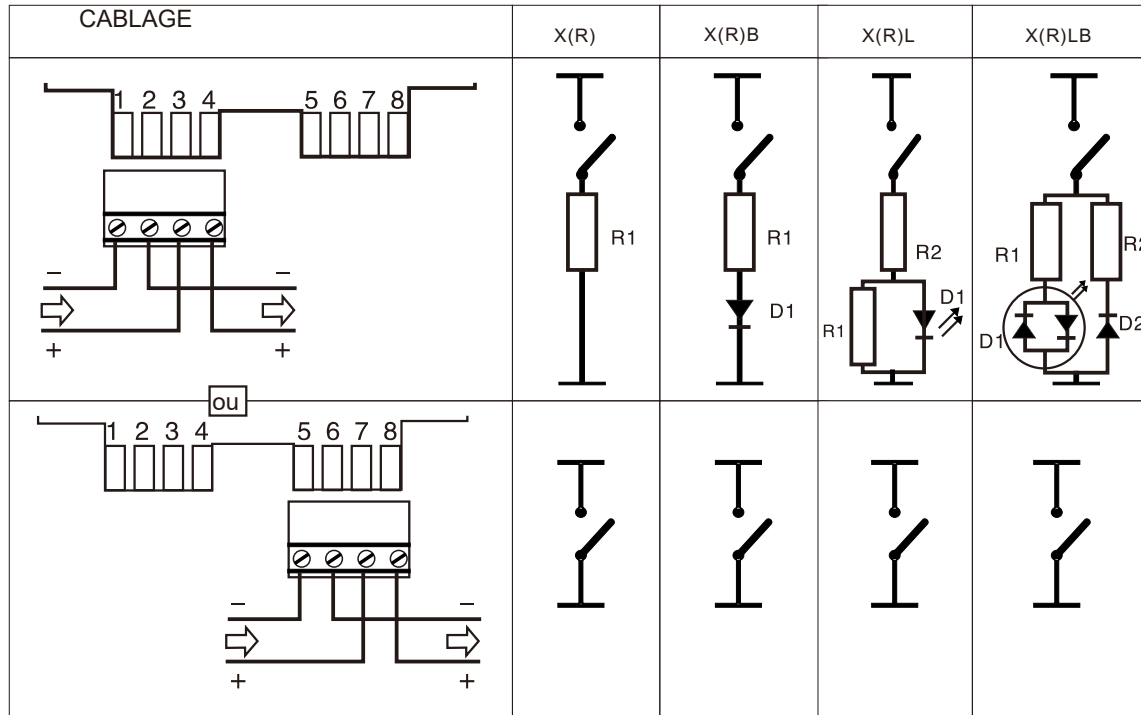
REPLACER VERRE / REINITIALISER



REINITIALISER



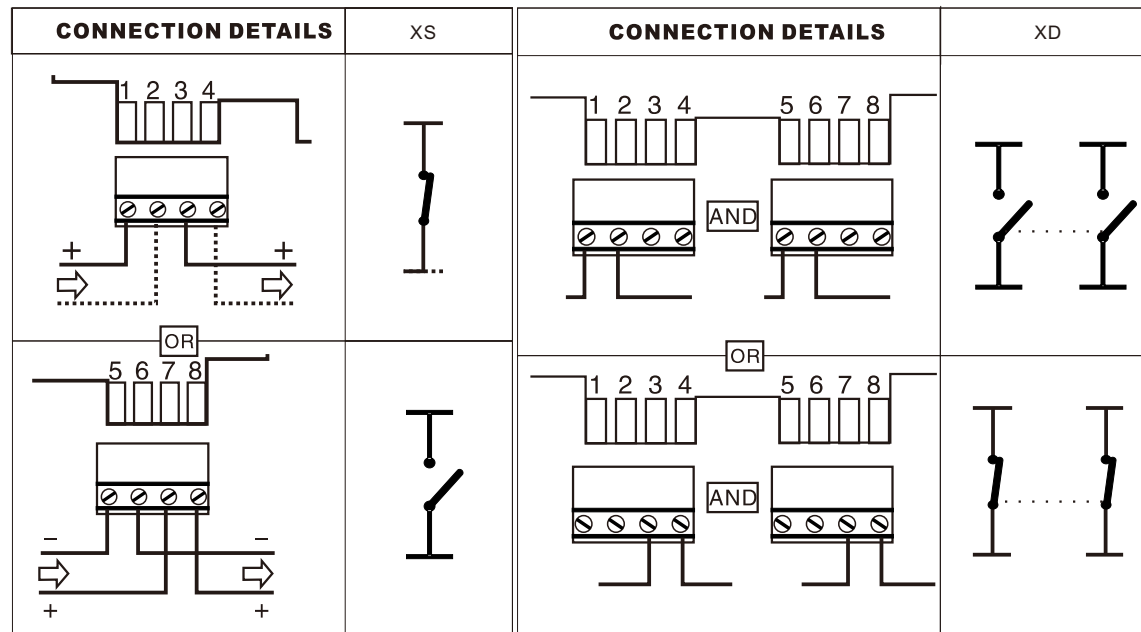
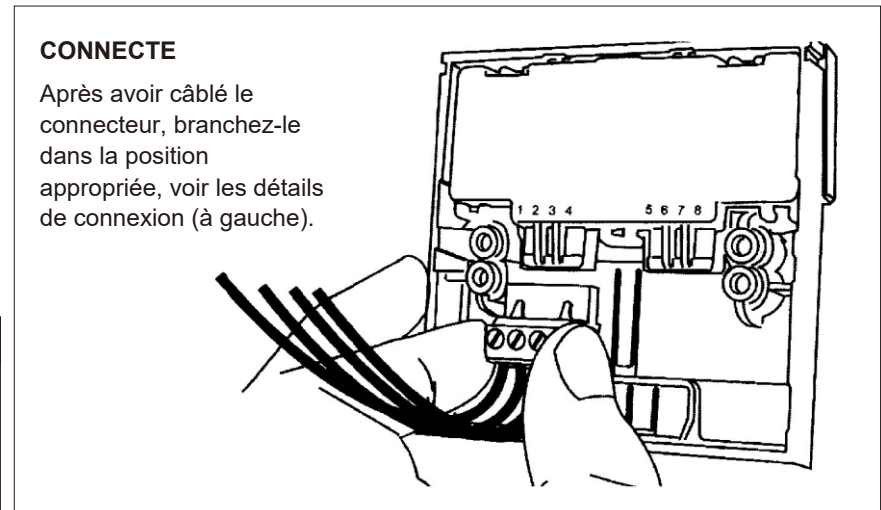
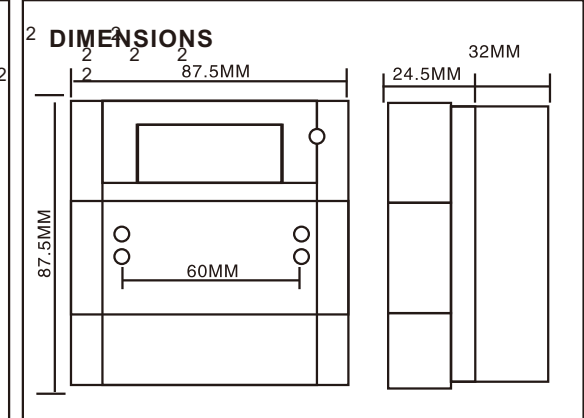
NOTICE INSTALLATION 1BDG-2C



2 2 2
 2 2 2
 2 2 2
 2 2 2

X--1n5Y65i
 (R)-- RESISTANCE
 B--DIODE
 L--LED
 LB--LED&DIODE
 S--5reWnYxei6
 D--DOUBLE POLE

E.G: R470L= RED, 470R,LED



TECHNICAL DATA

30VDC Max	-30°C to 70°C	Important Notes: Please do not over tighten fixing screws. The use of lubricants, cleaning solvents or petroleum based products should be avoided.
2A Max	Red, Ral 3001 Yellow, Ral 1006 Green, Ral 6016 White, Ral 9010 Blue, Ral 5002	
IP24D		
110/160g		